

Vol XIX, Issue 5

# PLAINS TALK

A Publication of West Plains Engineering, Inc.

MECHANICAL ELECTRICAL PLUMBING POWER

AN ENGINEERING SOLUTION CENTER

# In 2017...

Like many firms, sometimes we get so focused on meeting the next deadline or chasing the next big project – that we forget to slow down and take time to reflect. But as we created our final Plains Talk of the year, we couldn't help but notice how much has happened in the past 12 months. From expanding our services to new markets to supporting more than 130 different clients on 300 new projects – it's been a ride. For that, we simply have to say 'thank you'. Cliché as it may be this time of year, we mean it. Without our clients, partners and team across the Upper Midwest, we not only wouldn't get to do the work we love, but we wouldn't have nearly as much fun doing it.

As nice as it is to look back, 2018 is right around the corner and we all know this industry doesn't stay still for long. We've got a lot to look forward to next year, including investing more time and energy simply staying in touch with all of you. For one, Plains Talk will keep coming like clockwork every other month – and be on the lookout for more Strategic Direction Reports. If you haven't downloaded one yet, give it a try. We're also looking for more opportunities to present, hold lunch-n-learns and share ideas – any way we can be a resource above and beyond the project design.

Again – thanks for a fantastic 2017.

See you next year.

## AT A GLANCE

We added seven (7) new team members this year – three engineers, two CAD technicians and two support staff.



The Power Division expanded to Wyoming with John Rickert joining our Casper office.



West Plains partnered with 130 different clients in 2017.



In 2017, we added more than 300 projects company-wide.

David Clark, P.E. passed his Professional Engineer Exam to become licensed in the State of Iowa.



2017 Excellence in Energy Efficient Design Award for the Northwest Iowa Community College Applied Technology Building



Three (3) Strategic Direction Reports were published – technical white papers written by engineers, for clients.

Principal electrical engineer Todd Weidner became a Certified Electrical Safety Compliance Professional (CESCP).







## CASPER, WY

EST. 1994

“ Our office experienced a lot of change in 2017, but one thing that stayed the same was doing great local business with great local clients. On behalf of my staff, thank you for your business. ”

*Jeff Eidsness*  
Office Manager

### PROJECT HIGHLIGHTS

#### **Basin Middle & High School** *(in design)*

- 65K+ square feet
- Classrooms, gym, offices & commons
- \$15 million estimated cost

#### **Gruner Brothers Brewery** *(in design)*

- Renovation of the Petroleum Club
- Brewery, pub, beer garden & stage

#### **Casper Fire/EMS Station #5** *(in design)*

- 10K+ square foot new fire station
- Three apparatus bays
- \$2.9 million estimated construction cost

#### **Thunder Basin High School**

- 100K+ square foot renovation & addition
- Gym, theater, tech ed & multi-purpose areas
- \$27 million

#### **Casper YMCA**

- 41K square feet
- Wellness center, field house, exercise studios, daycare, pool, courts & commons
- \$11.6 million





## CEDAR RAPIDS, IA

EST. 2002

“ This past year was very community-focused for our team. We got to support city leaders and design teams who are working to better towns across the state. As Iowa natives, that’s extremely rewarding for us and we look forward to continuing to help build our local communities in 2018. ”

Jeff Reinhart, P.E. | Office Manager

### PROJECT HIGHLIGHTS

#### Linn County Public Health

- 65K square foot public health & child services
- Clinic, offices, child care & gymnasium

#### Hilton Garden Inn Convention Center Addition

- 20K square foot addition in Cedar Falls
- WPE also designing a new hotel adjacent to the property
- Estimated completion in 2019

#### Hieronymus Square

- 176K square foot, 7-story building
- Half apartments/half hotel
- Includes underground parking

#### Lone Tree Wellness Center (under construction)

- 20K square foot new facility
- Gym, weight room, cardio & aerobics

#### Kalona Community Center (under construction)

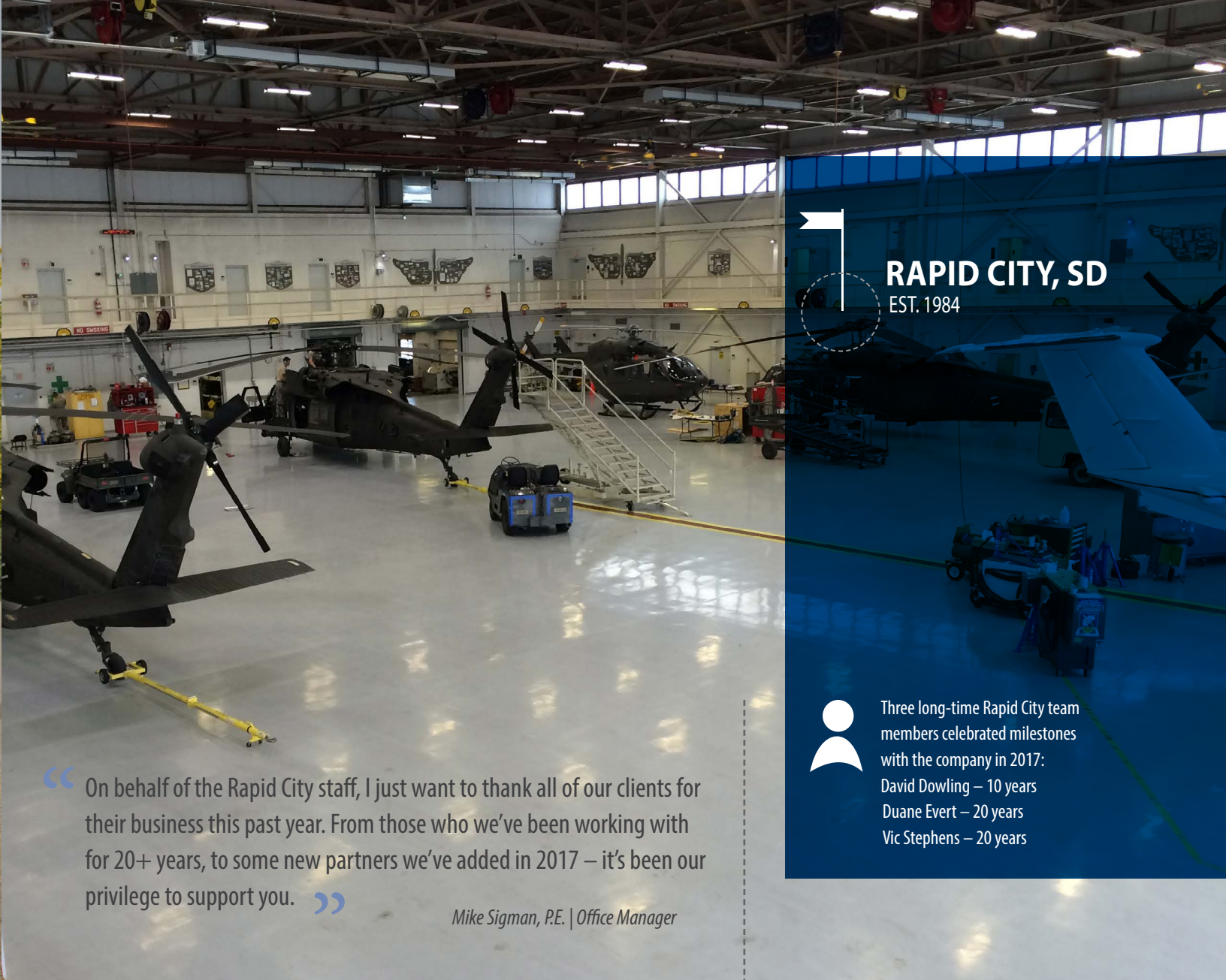
- 23K square foot addition + 4.5K remodel
- New gym and fitness center
- \$3.4 million estimated cost



David Clark, P.E. passed his professional engineering exam to become licensed in the state of Iowa as a Mechanical Engineer.



Office Manager Jeff Reinhart, P.E., and administrative assistant Becky Kramer celebrated their 15 and 10-year anniversaries, respectively, with West Plains.



**RAPID CITY, SD**  
EST. 1984



Three long-time Rapid City team members celebrated milestones with the company in 2017:  
David Dowling – 10 years  
Duane Evert – 20 years  
Vic Stephens – 20 years

“ On behalf of the Rapid City staff, I just want to thank all of our clients for their business this past year. From those who we’ve been working with for 20+ years, to some new partners we’ve added in 2017 – it’s been our privilege to support you. ”

*Mike Sigman, P.E. | Office Manager*

## PROJECT HIGHLIGHTS

**Basin Elementary (in design)**

- 27K+ square feet K-5
- Classrooms, special needs space, offices, conference rooms, music room, art room & media center
- \$10 million estimated cost

**Bison Schools Addition (in design)**

- 32K square foot addition
- Original classrooms will be demolished and replaced with a parking lot
- \$5.4 estimated cost

**Ft. Meade VA Building 113 Inpatient Functions Renovation (in design)**

- Following a study completed by WPE in 2016
- \$6.65 million estimated cost

**SDARNG Readiness Center (in design)**

- New 58K+ square foot AASF at the Rapid City Regional Airport
- \$3.9 million estimated cost

**Nebraska Army Aviation Support Facility (under construction)**

- 57K square foot renovation for the Nebraska Army National Guard
- \$3.9 million estimated cost

**Sturgis Public Works (under construction)**

- 32K square feet – 4K office & 28K shop
- Relocating existing fuel dispensing tanks
- \$4.3 million estimated cost

**Family Thrift Center Renovations**

- Major interior renovations to two (2) Family Thrift Center grocery stores

**Southwest Fire Station #5**

- 1.4K square foot addition & 800 square foot renovation
- \$500K construction cost

**The Nest Hotel**

- Urban renewal of a 41-year old hotel under new ownership
- Focus on efficient, high-performance utilities

**TRU Hotel by Hilton (under construction)**

- Expansion of Cadillac Jacks in Deadwood
- +100 rooms and below-grade parking
- \$9.7 million construction cost



## SIoux FALLS, SD

EST. 1987

### PROJECT HIGHLIGHTS

#### **SD Animal Disease Research Diagnostics Lab** *(in design)*

- 74K square foot addition + 35K renovation
- Biggest project ever on the space
- \$60 million estimated cost

#### **SDSU Stanley J. Marshall Center Addition & Renovations** *(Phase 1 - under construction)*

- Bball courts, wrestling facility, team suites, treatment space, offices and classrooms
- \$45 million estimated cost (all phases)

#### **Brookings South Fire Station** *(under construction)*

- 6K square feet
- \$1.4 million estimated cost

#### **Gage Brothers, Inc. Plant & Office** *(under construction)*

- 190K square feet
- \$40 million estimated cost

#### **Graystone Heights Apartment Complex** *(under construction)*

- 330-unit complex
- Underground parking, community & fitness centers, theatre, spa, indoor/outdoor pools
- \$37.7 million construction cost

#### **Royal Canin** *(under construction)*

- 256K square foot dog food manufacturing plant and office
- Seeking LEED Gold certification
- \$43 million estimated cost

#### **Boys & Girls Club of Aberdeen**

- Doubled the size of the previous space
- Gym, game room, teen area, classrooms, locker rooms, offices and commercial kitchen/lunch room
- \$5.2 million construction cost

#### **CarsforSale.com Corporate Headquarters**

- 104K square foot, four-story office
- Theatre, indoor putting green with oscillating floor, full-scale bank vault door, custom slide
- \$17.4 million construction cost

#### **DSU Student Services Center**

- 58K square foot conversion of the existing Madison Community Hospital
- \$7 million estimated cost

#### **Lincoln County Highway Department Maintenance Building**

- 70K square foot maintenance & storage
- Included a salt shed and fuel island
- \$6.9 million construction cost



Our Sioux Falls teams was awarded the 2017 Excellence in Energy Efficient Design Award for the Northwest Iowa Community College Applied Technology Building in Sheldon, IA.



Electrical designer Harlan Osterloo marked a milestone 25 years in the Sioux Falls office of West Plains Engineering in 2017. Mechanical engineer Isaac Anderson, P.E. celebrated his 10-year anniversary.



“Our office has gotten to work on remarkable, challenging projects in 2017 and that’s thanks to the incredible teams we’ve come to know. I continue to be amazed by the people we meet in this industry and I’m so proud to support the work they do.”

Marty Christensen, P.E.  
Office Manager





Principal electrical engineer Todd Weidner became a Certified Electrical Safety Compliance Professional (CESCP).

## PROJECT HIGHLIGHTS

### City of Sioux City Arc Flash

- Assessment of all city-owned facilities
- 120 locations total

### South Dakota State Fair Electrical Assessment

- System evaluation for code violations and load capacity issues

### Millennium Recycling Power Quality Study

- Industrial recycling operation
- Arc flash analysis and identifying violations



**ELECTRICAL SPECIALTIES**  
EST. 2013

“We had a great 2017 supporting clients around the region with critical safety studies. This next year we'll focus on our training courses so we can deliver a full service experience.”

*Todd Weidner, P.E.  
Division Manager*

## PROJECT HIGHLIGHTS

### Pete Lien & Sons Laramie Hydrating Plant MCC (*in design*)

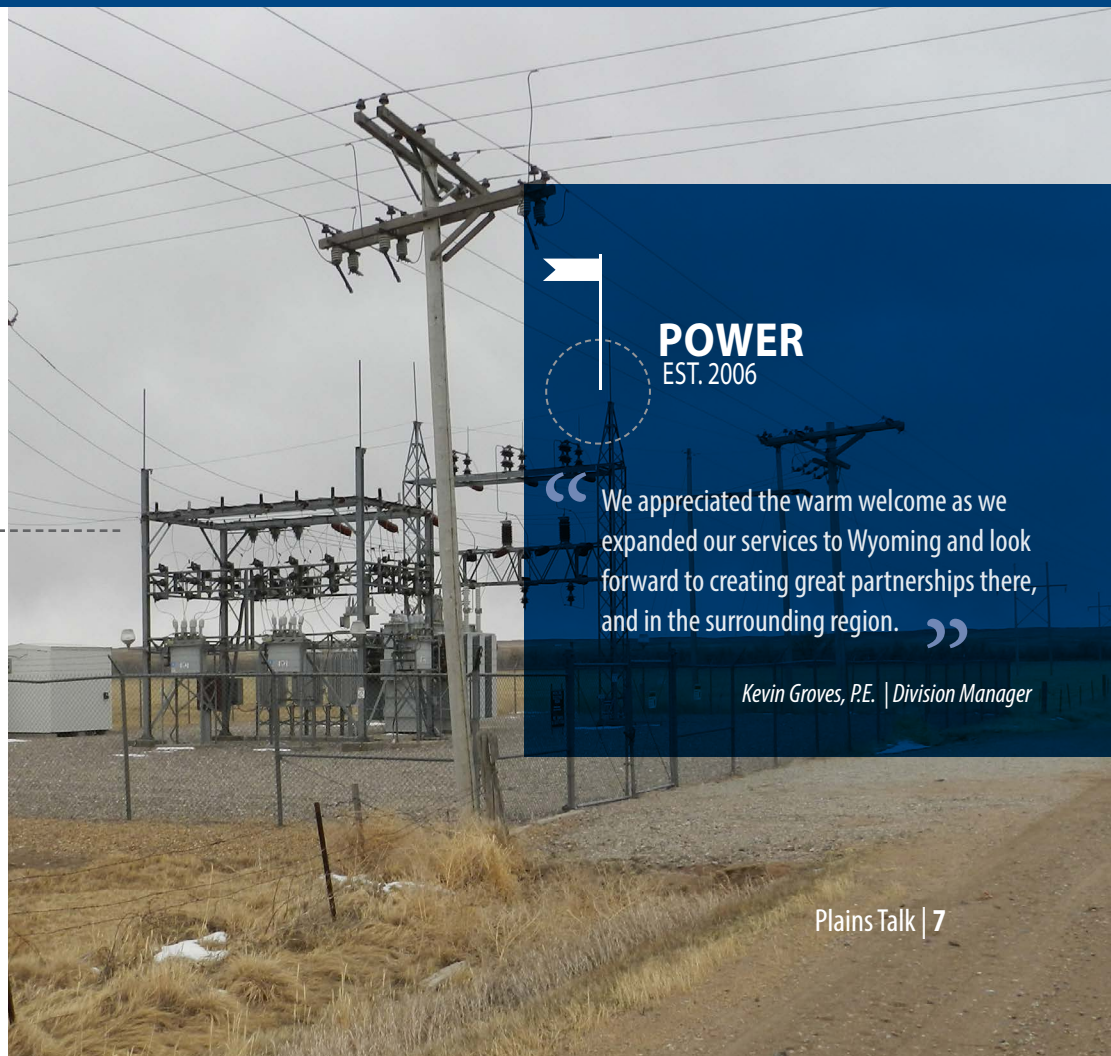
- Design of main service and MCC
- Includes power and motor controls

### Custer State Park Electrical Conversion (*under construction*)

- Conversion from overhead to underground lines at the Sylvan Lake cabin complex

### GEA Sedwick Transformer Foundation

- Highline Electric Association in Holyoke, CO
- Replacement of an existing transformer foundation



**POWER**  
EST. 2006

“We appreciated the warm welcome as we expanded our services to Wyoming and look forward to creating great partnerships there, and in the surrounding region.”

*Kevin Groves, P.E. | Division Manager*



The Power Division expanded to Wyoming with Senior Electrical Engineer John Rickert joining our Casper office.



Division Manager Kevin Groves, P.E. celebrated his 10-year anniversary.



233 West Broadway, Bismarck, ND 58501

(701) 751-7322

1750 Rand Road, Rapid City, SD 57702

(605) 348-7455

4609 S. Techlink Circle, Sioux Falls, SD 57106

(605) 362-3753

145 S. Durbin, Suite 205, Casper, WY 82601

(307) 234-9484

215 2nd Avenue SE, Suite 200, Cedar Rapids, IA 52401

(319) 365-0030

# From all of us...thanks for a great year!

